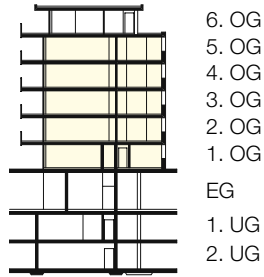
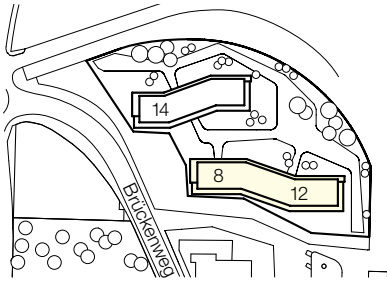
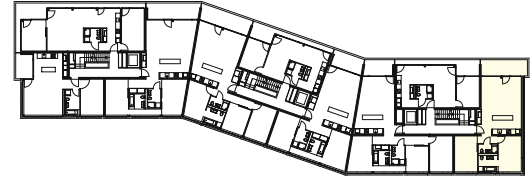


Liegenschaft	Brückenweg 8, 10, 12, 14; 3930 Visp
Haus	Brückenweg 12 (b)
Lage	1./2./3./4./5./6. Obergeschoss
Objekt	3.5-Zimmerwohnung
Fläche	83.1 m ²
Objekt-Nummer	27000.05.1012/1023/1033/1043/1053



- 6. OG
- 5. OG
- 4. OG
- 3. OG
- 2. OG
- 1. OG
- EG
- 1. UG
- 2. UG

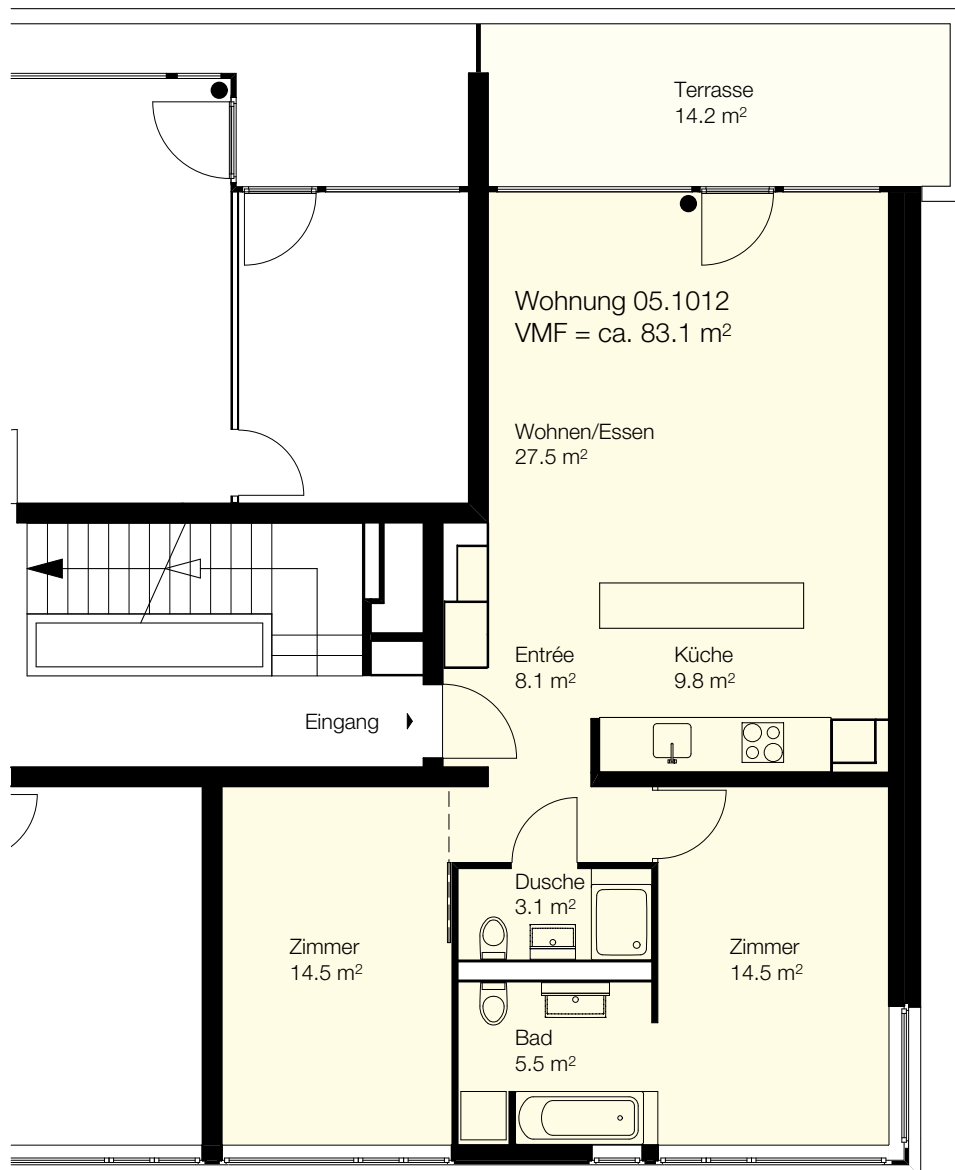


Situation

Schnitt

Übersicht

Grundriss
Masstab 1:100



0 1 2 3 4 5m