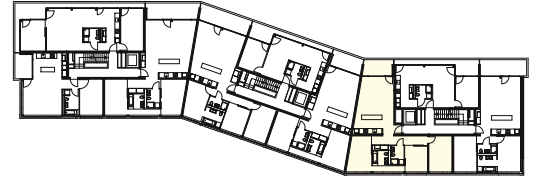
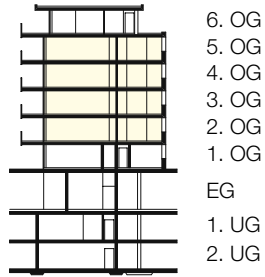
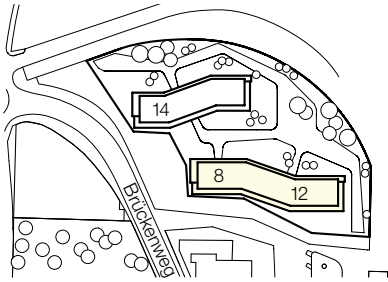


Liegenschaft	Brückenweg 8, 10, 12, 14; 3930 Visp
Haus	Brückenweg 12 (b)
Lage	2./3./4./5./6. Obergeschoss
Objekt	4.5-Zimmerwohnung
Fläche	100.4 m ²
Objekt-Nummer	27000.05.1021/1051/1041/1051



Situation

Schnitt

Übersicht

Grundriss
 Masstab 1:100

