

Liegenschaft Brückenweg 8, 10, 12, 14; 3930 Visp

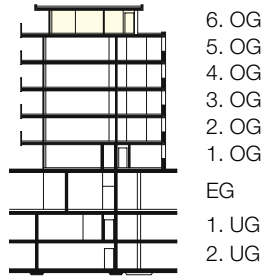
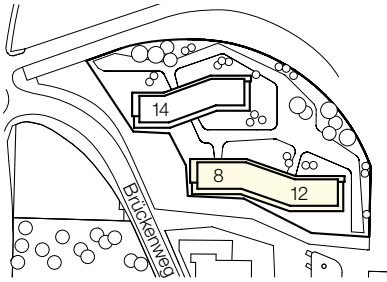
Haus Brückenweg 12 (a)

Lage 6. Obergeschoss

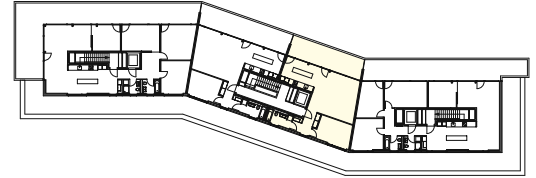
Objekt 2.5-Zimmerwohnung

Fläche 80.5 m²

Objekt-Nummer 27000.04.1062



6. OG
5. OG
4. OG
3. OG
2. OG
1. OG
EG
1. UG
2. UG

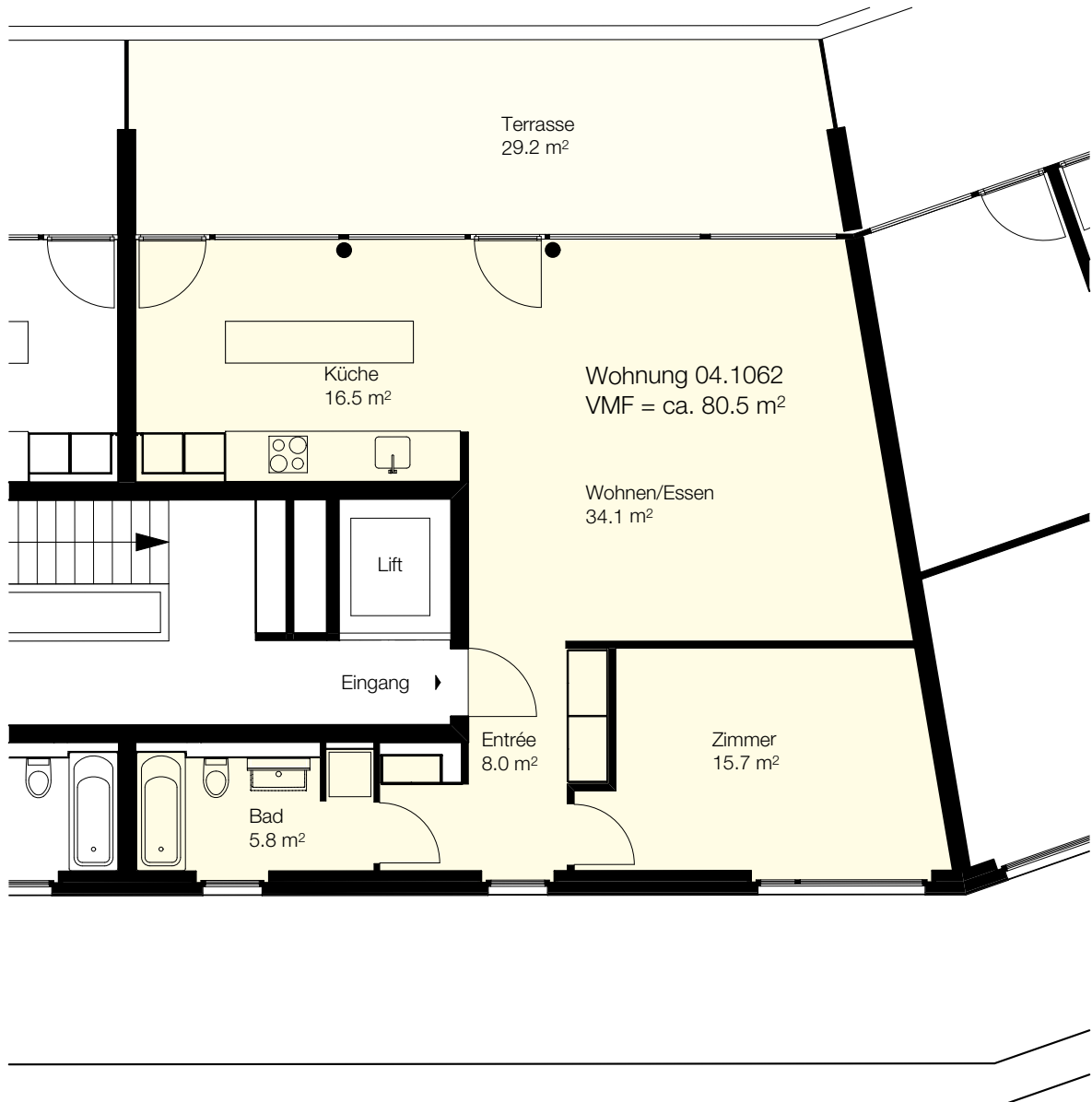


Situation

Schnitt

Übersicht

Grundriss
Massstab 1:100



0 1 2 3 4 5m