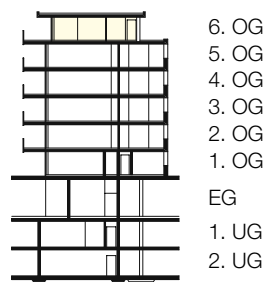
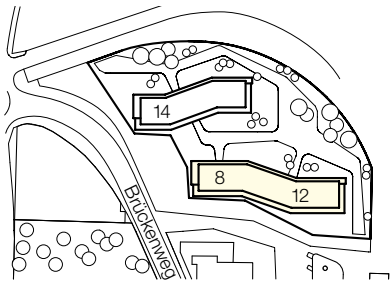
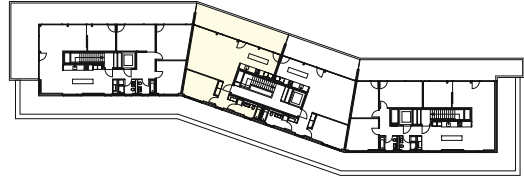


Liegenschaft	Brückenweg 8, 10, 12, 14; 3930 Visp
Haus	Brückenweg 12 (a)
Lage	6. Obergeschoss
Objekt	2.5-Zimmerwohnung
Fläche	84.1 m ²
Objekt-Nummer	27000.04.1061



- 6. OG
- 5. OG
- 4. OG
- 3. OG
- 2. OG
- 1. OG
- EG
- 1. UG
- 2. UG



Situation

Schnitt

Übersicht

Grundriss
 Masstab 1:100

