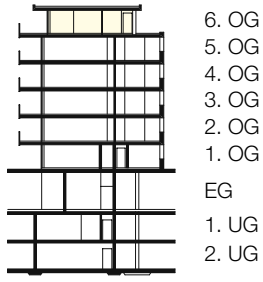
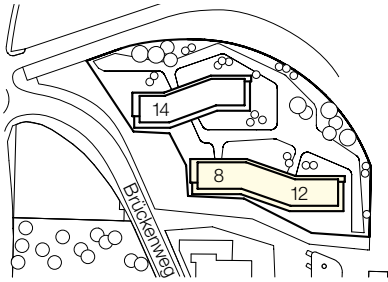
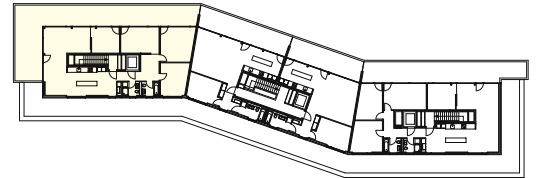


| | |
|---------------|-------------------------------------|
| Liegenschaft | Brückenweg 8, 10, 12, 14; 3930 Visp |
| Haus | Brückenweg 8 |
| Lage | 6. Obergeschoss |
| Objekt | 4.5-Zimmerwohnung |
| Fläche | 153.3 m ² |
| Objekt-Nummer | 27000.03.1061 |



- 6. OG
- 5. OG
- 4. OG
- 3. OG
- 2. OG
- 1. OG
- EG
- 1. UG
- 2. UG

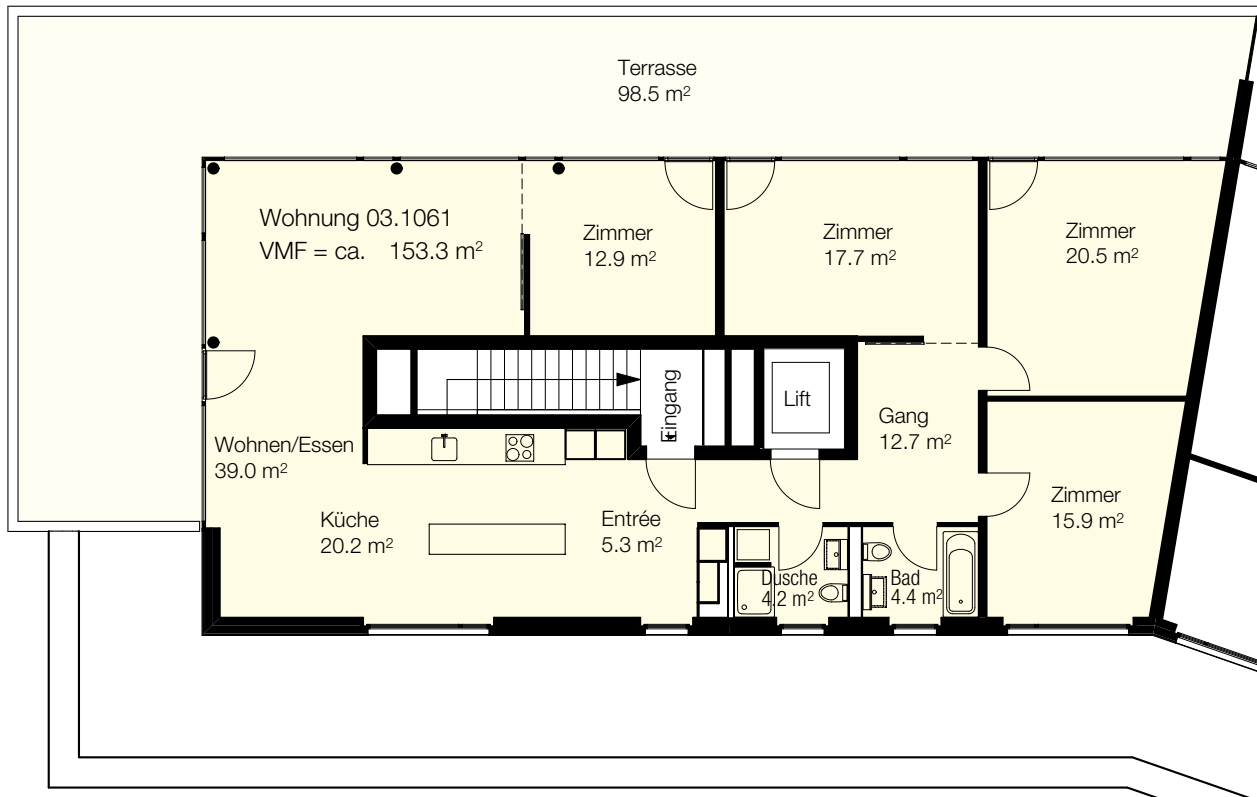


Situation

Schnitt

Übersicht

Grundriss
Masstab 1:150



0 1 2 3 4 5m