

Liegenschaft Brückenweg 8, 10, 12, 14; 3930 Visp

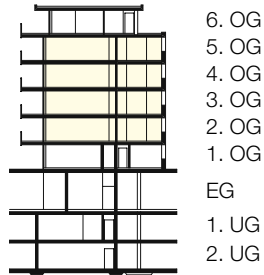
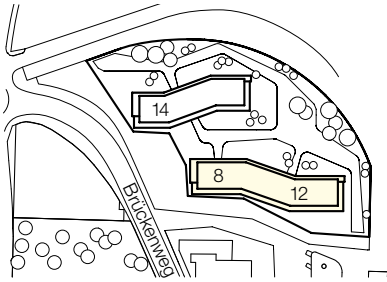
Haus Brückenweg 8

Lage 2./3./4./5. Obergeschoss

Objekt 3.5-Zimmerwohnung

Fläche 97.75 m<sup>2</sup>

Objekt-Nummer 27000.03.1023/1033/1043/1053



6. OG  
5. OG  
4. OG  
3. OG  
2. OG  
1. OG  
EG  
1. UG  
2. UG

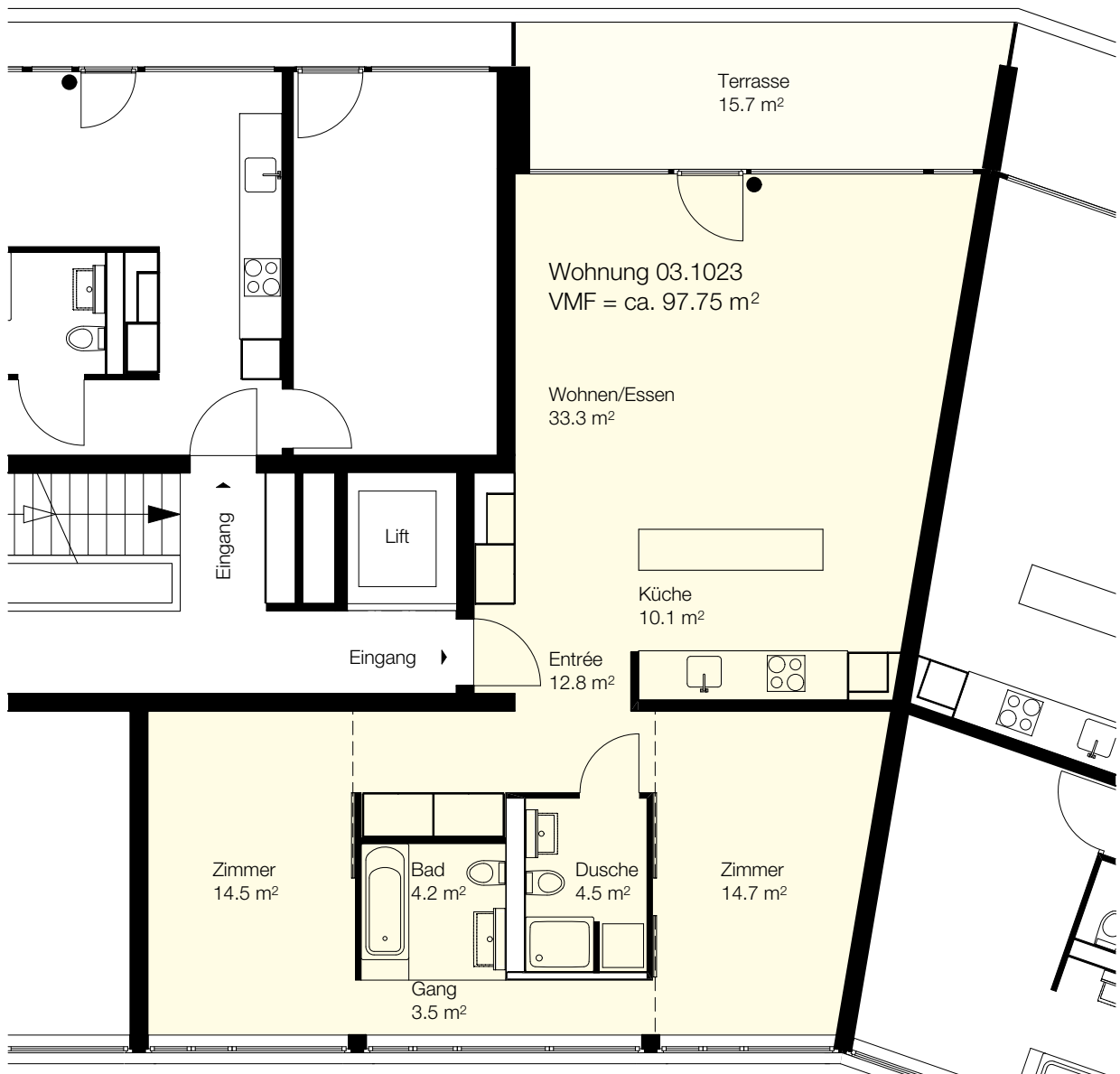


Situation

Schnitt

Übersicht

Grundriss  
Massstab 1:100



0 1 2 3 4 5m