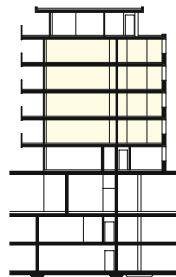
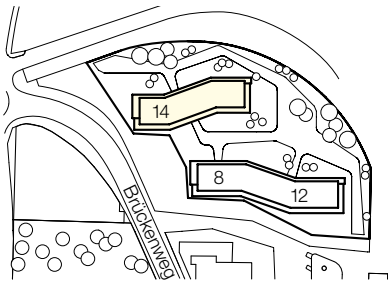


Liegenschaft	Brückenweg 8, 10, 12, 14; 3930 Visp
Haus	Brückenweg 14 (b)
Lage	2./3./4./5. Obergeschoss
Objekt	3.5-Zimmerwohnung
Fläche	92.25 m <sup>2</sup>
Objekt-Nummer	27000.02.1021/1031/1041/1051



- 6. OG
- 5. OG
- 4. OG
- 3. OG
- 2. OG
- 1. OG
- EG
- 1. UG
- 2. UG

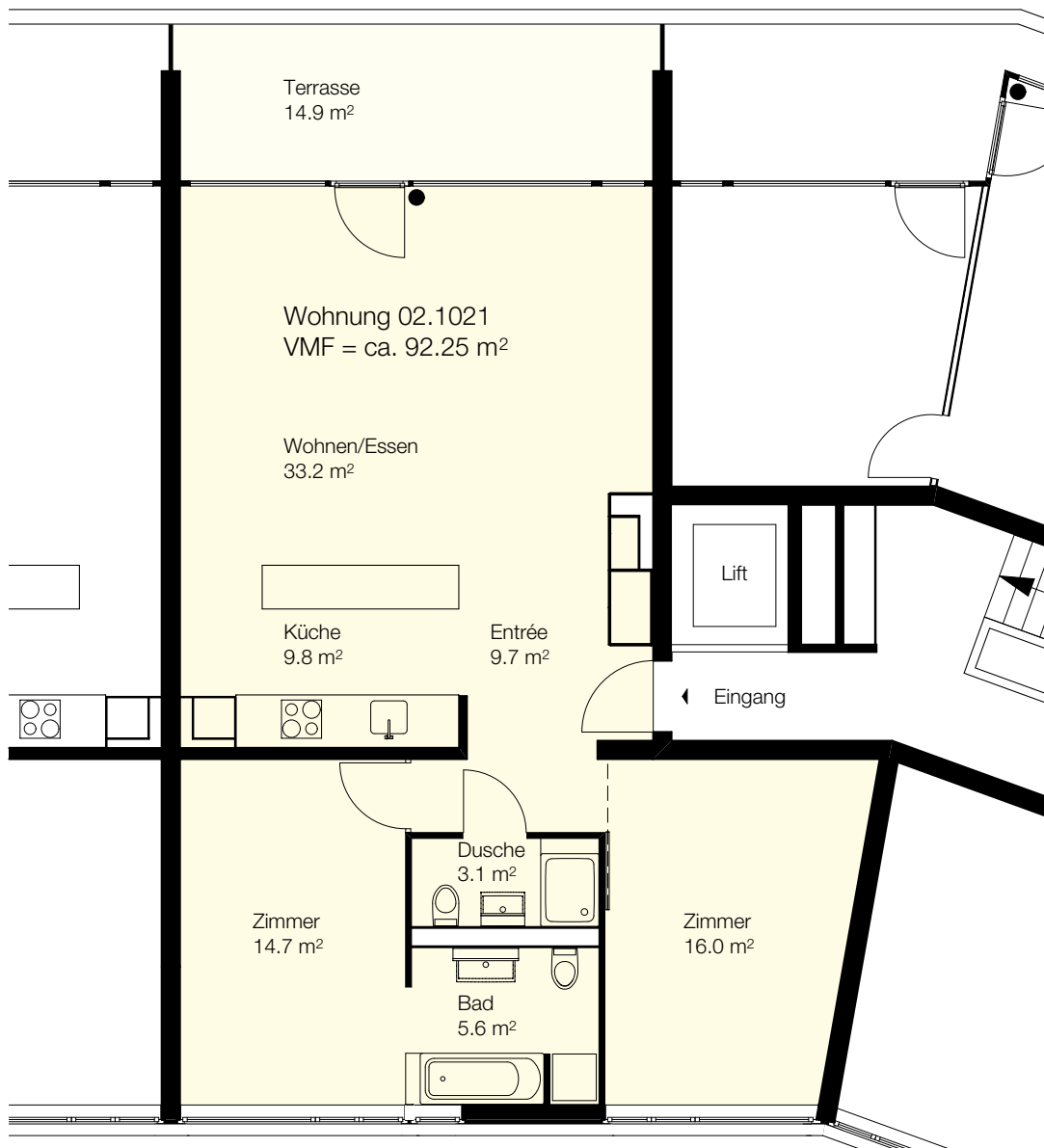


Situation

Schnitt

Übersicht

**Grundriss**  
 Masstab 1:100



0 1 2 3 4 5m